

# Noordstroom



## Anchor handling tug supply vessel

IMO nr.	9771705
Call sign	PIWC
Type	Shoalbuster 3512
Constructed	2016
Bollard Pull	61.6 tons
Speed	11.5 knots
Free deck space	145 m <sup>2</sup>
Deckload	15.0 - 3.0 ton/m <sup>2</sup>

## Basic functions

Towing, Mooring, Pushing, Anchor Handling,  
Supplying, Surveying, Ploughing, Crew Transfer

GRT / NT	476 / 142
Dimensions	34.80 x 12.00 x 4.30 mtr.
Draft (min. / max.)	2.90 / 3.40 mtr.
Air draft (min. / max.)	10.86 / 17.88 mtr.
Displacement	597 tons

Tank capacities	Fuel oil	255.0 m <sup>3</sup>	Gear oil	3.3 m <sup>3</sup>	Fresh water	43.0 m <sup>3</sup>
	Lub oil	3.7 m <sup>3</sup>	Dirty oil	4.5 m <sup>3</sup>	Sewage	5.8 m <sup>3</sup>
	Hydr. oil	2.0 m <sup>3</sup>	Sludge	2.0 m <sup>3</sup>	Bilge water	5.0 m <sup>3</sup>

Transfer pumps Fuel / Fresh water, type SIHI - 50 m<sup>3</sup>/hr. @ 4.8 bar

Nautical equipment 2x Radar (sea/river) - Magnetic compass - Gyro compass - Auto pilot - GPS / Satellite navigation system - ECDIS - AIS  
2x Echosounder - Speedlog - Windindicator  
2x VHF + DSC - 1x VHF - SSB Radio + DSC - Navtex - VSAT system - 2x Inmarsat-C - EPIRB - SART - 2x HH VHF - Satcom + GSM

Deck equipment Hydr. crane, HS Marine, type AKC290-LHE3, 11.3T - 16.5 mtr. / 24.4T - 7.89 mtr.  
Towing winch, Kraaijeveld, WF - 1000 mtr., Ø 48 mm steel wire, 59.1 / 115 tons  
+ incl. AH winch, 600 mtr., Ø 48 mm steel wire, 101.7 / 150 tons  
Tugger winch, power 12 tons - Hydr. Towing pins + Chain stopper, SWL 100T  
Stern roller, L. 5.00 mtr., Ø 1180 mm, SWL 165T - Towing hook & Gob eye, SWL 55T  
Container locks (7x 20 ft. / 3x 10 ft.) - Push bow

Special equipment HV/AC installation - Sewage treatment plant - (fresh) Watermaker - Fuel oil separator  
Moonpool (Netto: 700 x 600 mm)

Optional A-frame (with plough) / 4p-Mooring system  
Waterinjection Dredging system / ROV - Diving Ops. platform

Accommodation 11 persons (conform 'ILO 2006 rules')

Classification BV - I HULL • MACH / Tug, Special service - multi purpose ship / Unrestricted navigation • AUT-UMS -  
Notation: Anchor Handling / Notation: Clean ship  
NSI - Unrestricted navigation  
# IMO - Inventory of Hazardous Materials (Green Passport)

Engines	3x Caterpillar, type C32-TTA SCAC, each 970 kW / 1.319 HP @ 1800 rpm
Gear Boxes	3x Reintjes, type WAF 675L reduction 7.07:1
Generator Sets	2x Caterpillar, type C7.1, each 187.5 kVA, voltage 230/400 VAC - 50 Hz
E-Power Generator	Combined with center C32 main engine, 600 ekW @ 1800 rpm - 440 VAC
Hydro Set	Electric drive with 3x E-motor, 2x 110 kW / 1x 52 kW
Propulsion	3x Fixed pitch propeller in Van der Giessen Optima Nozzle (Ø 2250 mm)
Bow Thruster	Electrical driven FPP, 243 kW / 320 HP (Ø 960 mm)



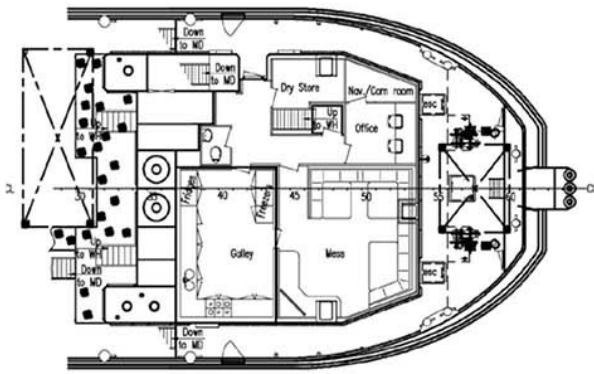
Van Wijngaarden Marine Services BV

Buitenweistraat 15, 3372 BC Hardinxveld-Giessendam  
The Netherlands

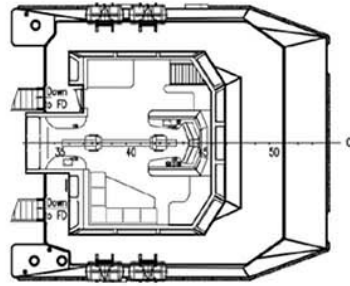
E info@wijngaarden.com  
T +31 (0) 184 490 244

wijngaarden.com

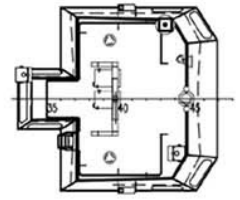
Forecastle deck



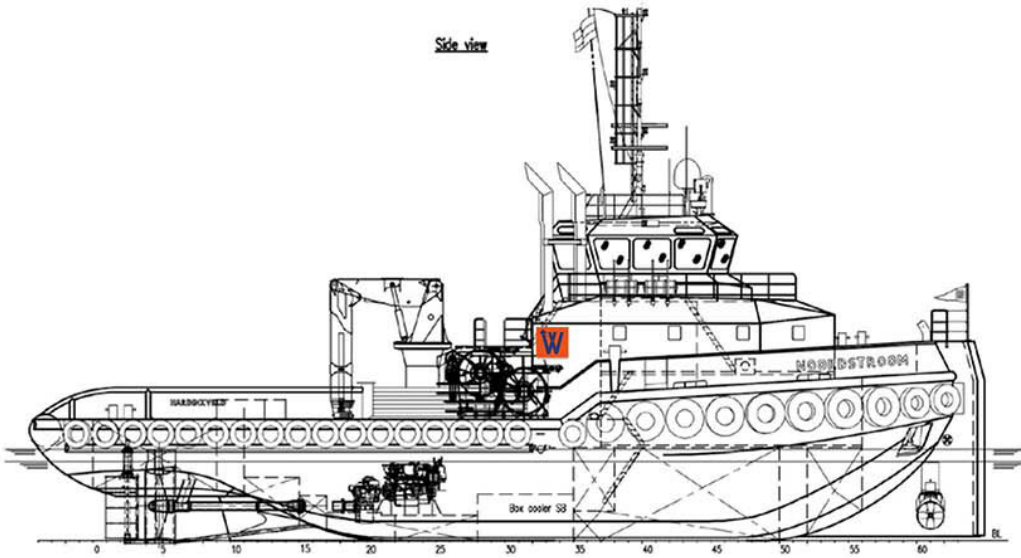
Wheelhouse



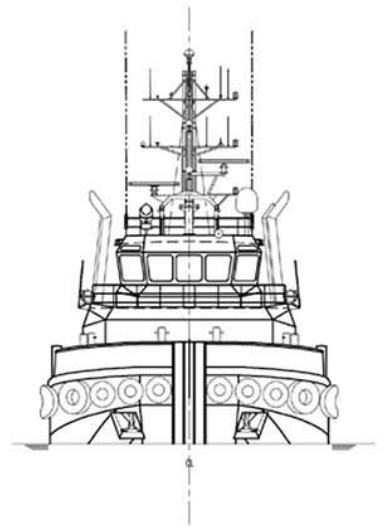
Top deck



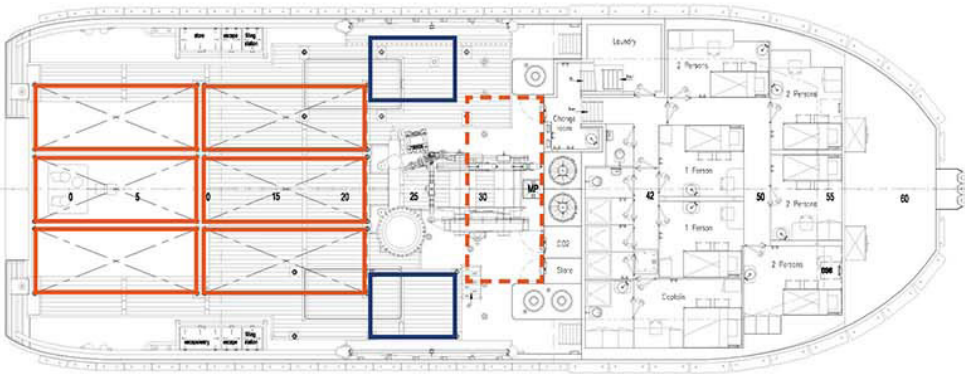
Side view



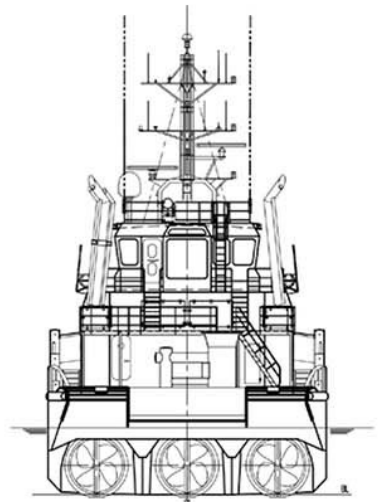
Front view



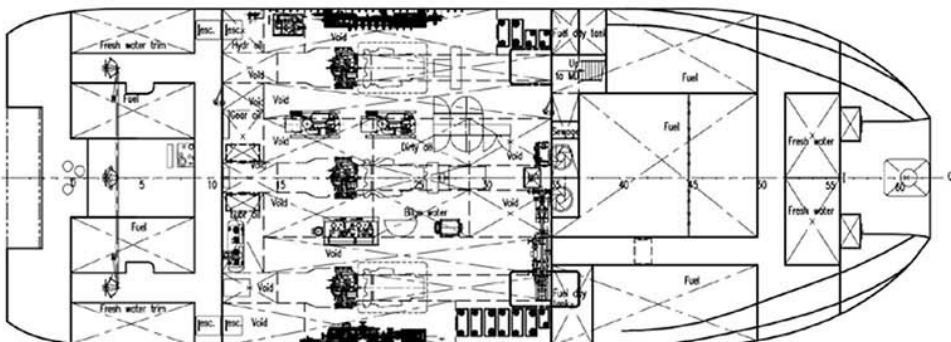
Main deck



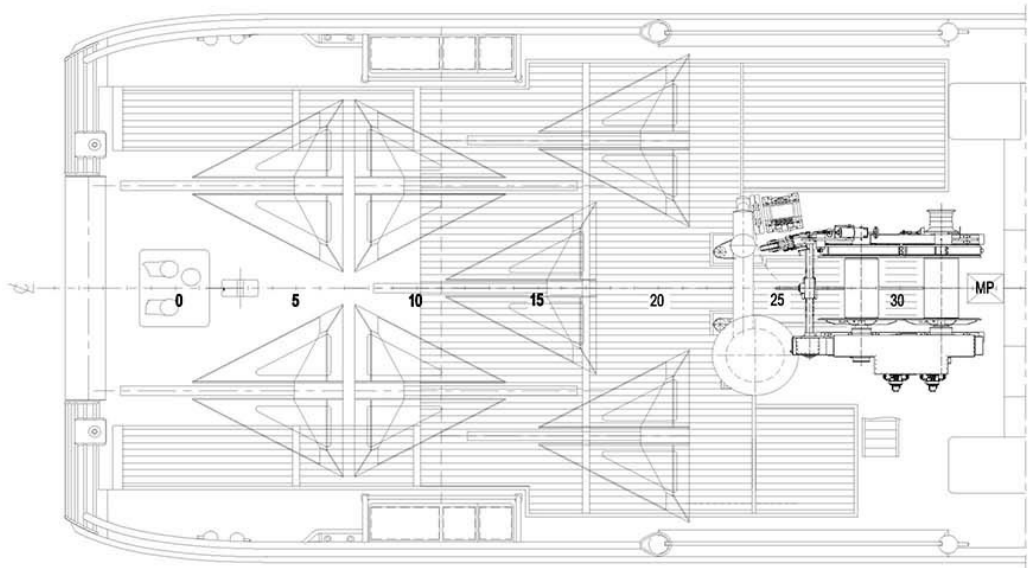
Rear view



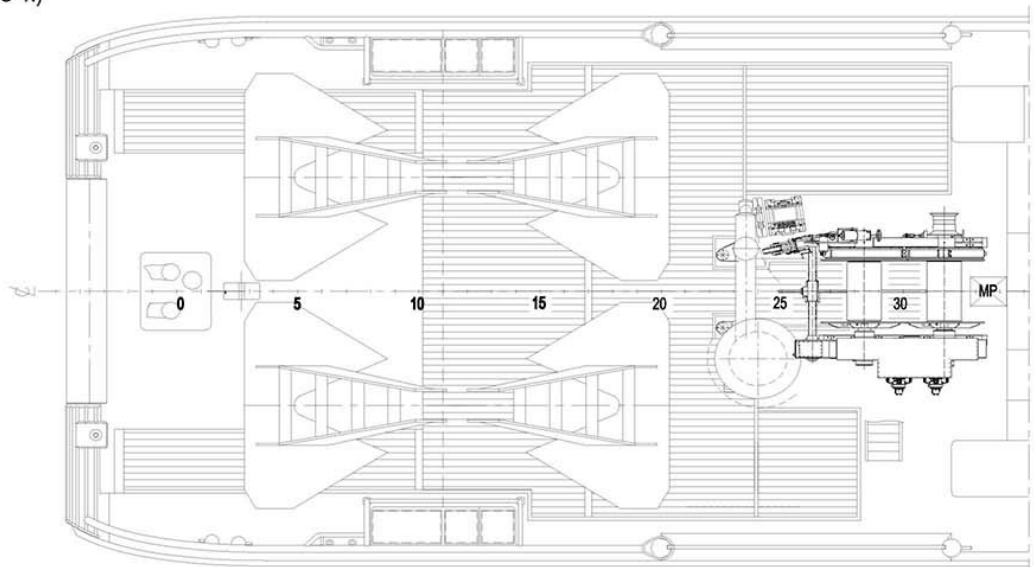
Below main deck



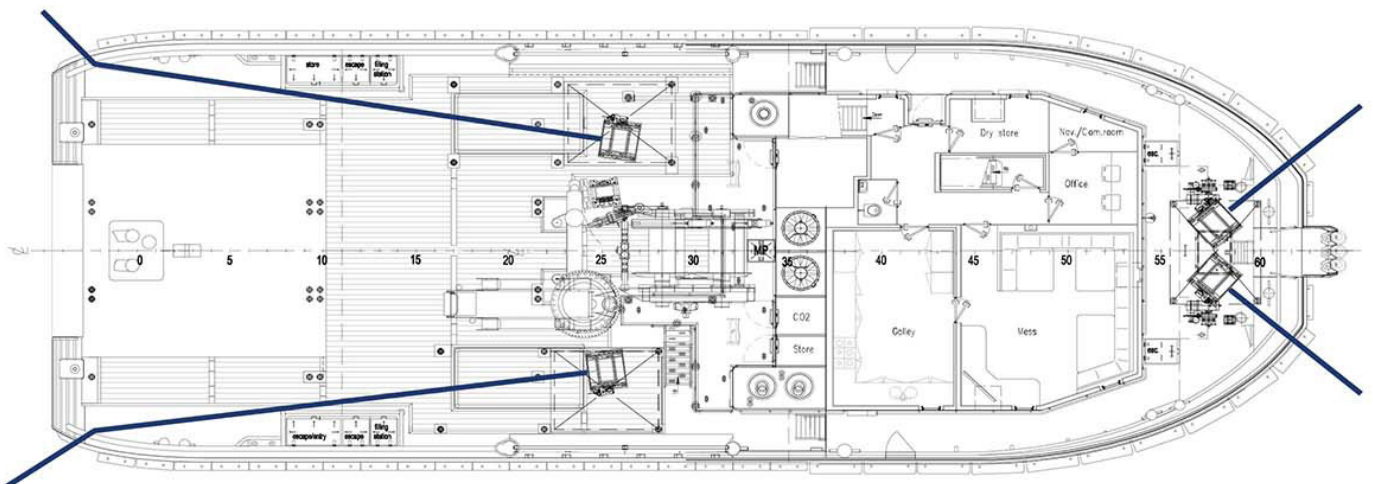
**Anchor-Handling Options:**  
- DELTA Flipper anchors (7x 7.5 T.)



**Anchor-Handling Options:**  
- STEVPRIS anchors (4x 5.0 T.)

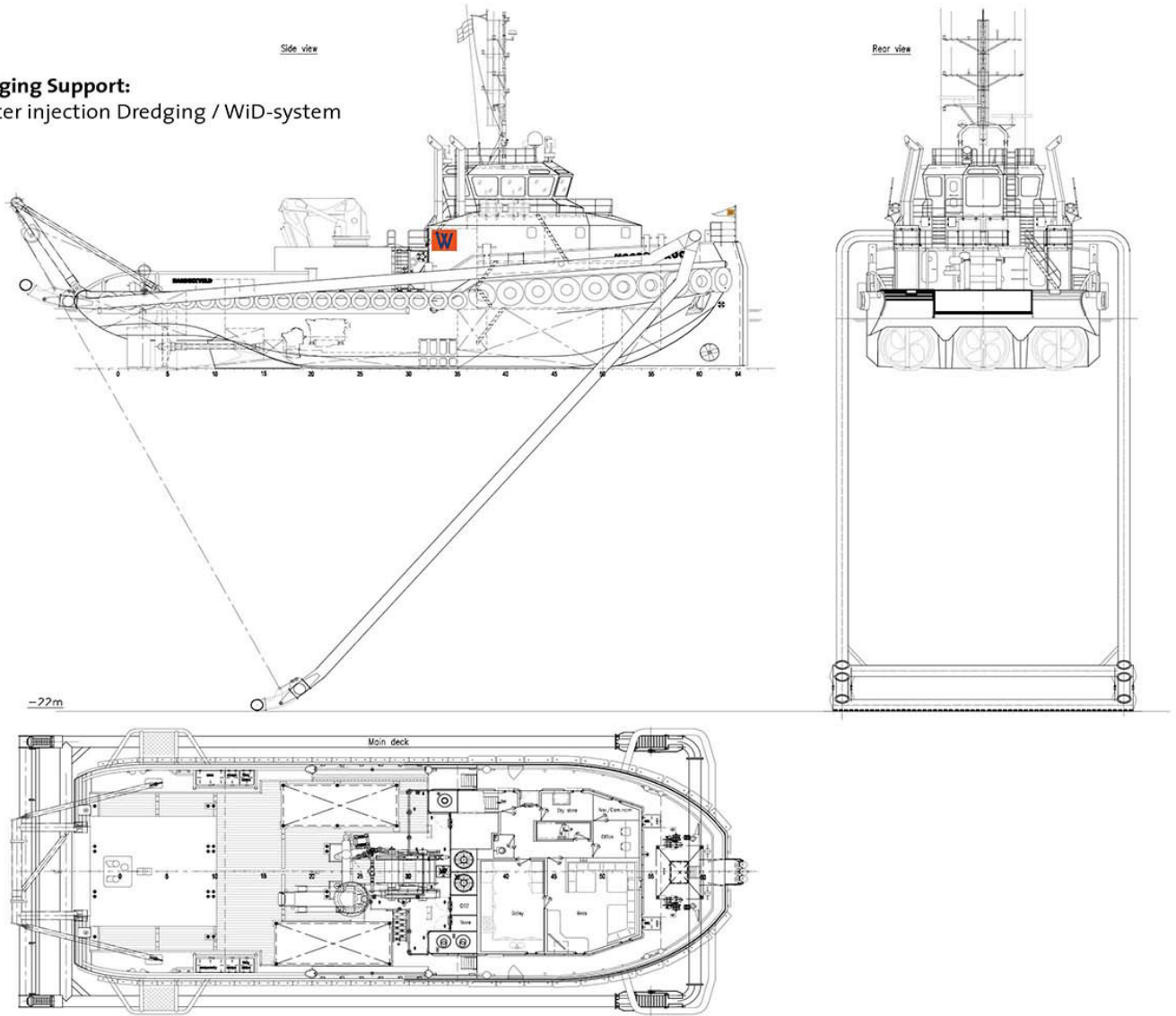


**4p-Mooring system**





**Dredging Support:**  
 - Water injection Dredging / WiD-system



**Dredging Support:**  
 - Ploughing / Seabed Levelling Ops.  
 - Moonpool / Surveying Ops.

