

Amerstroom



Anchor handling tug supply vessel

IMO nr.	9665023
Call sign	PCQF
Type	Eurotug 2308
Constructed	2013
Bollard Pull	16.1 tons
Speed	10.0 knots
Free deck space	60 m ²
Deckload	10.0 - 3.0 ton/m ²

Basic functions

Towing, Mooring, Pushing, Anchor Handling,
Supplying, Surveying, Ploughing, Crew Transfer

GRT / NT	165 / 49
Dimensions	23.68 x 8.75 x 3.25 mtr.
Draft (min. / max.)	2.20 / 2.65 mtr.
Air draft (min. / max.)	7.20 / 7.55 mtr.
Displacement	230 tons

Engines	2x Caterpillar, type C18, each 357 kW / 485 HP @ 1800 rpm
Gear Boxes	2x ZF, type W 650 reduction 6.120:1
Generator Sets	2x Caterpillar, type C4.4 DI, each 65 kVA, voltage 220/380 V - 50 Hz
Hydro Set	1x Caterpillar, type C9, 174 kW / 235 HP @ 1800 rpm
Propulsion	2x Fixed pitch propeller in Forward Nozzle (Ø 1500mm)
Bow Thruster	Hydraulic driven FPP, 92 kW / 125 HP (Ø 595mm)

Tank capacities	Fuel oil 50.0 m ³ Lub oil 1.0 m ³ Hydr. oil 1.0 m ³	Sludge 2.0 m ³ Fresh water 19.5 m ³ Sewage 3.5 m ³	Bilge water 4.0 m ³
-----------------	--	---	--------------------------------

Transfer pumps Fuel / Fresh water, 45 m³/hr. @ 4.8 bar

Nautical equipment Radar (sea/river) - Magnetic compass - Gyro compass - Auto pilot - GPS / Satellite navigation system - AIS - 2x Echosounder
Speedlog - Windindicator
3x VHF + DSC - SSB Radio - Navtex - V-SAT system - 2x Inmarsat-C - EPIRB - SART - 2x HH VHF - Satcom + GSM

Deck equipment Hydr. crane, Heila, type HLRM 65-4S, 65 T/m (4.5T - 12.74 mtr. / 13.5T - 4.86 mtr.)
Towing winch, Kraaijeveld, DD - 500 mtr., Ø 30 mm steel wire, 35 / 60 tons
+ incl. AH winch, 75 mtr., Ø 32 mm steel wire
Tugger winch, power 8 tons - Hydr. Towing pins + Chain stopper, SWL 35T - Stern roller, L 3.60 mtr., SWL 60T
Towing hook / Gob eye, SWL 20T - Container locks (1x 20 ft./ 2x 10 ft.) - Capstan - Push bow

Special equipment AC/CV installation - Air compressor, AtlasCopco, cap. 30 m³/hr. @ 10 bar - Fuel oil separator
Moonpool (Netto: 750 x 600 mm)
Optional: A-frame (with plough), SWL 30T

Accommodation 6 persons

Classification BV - I HULL • MACH / Tug, Special service - multi purpose ship / Unrestricted navigation • AUT-UMS
NSI - Unrestricted navigation / SPI-Certificate



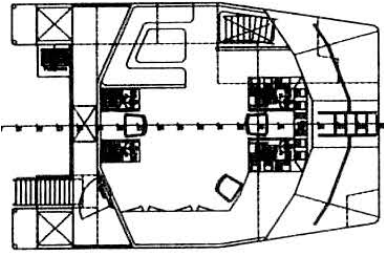
Van Wijngaarden Marine Services BV

Buitenweistraat 15, 3372 BC Hardinxveld-Giessendam
The Netherlands

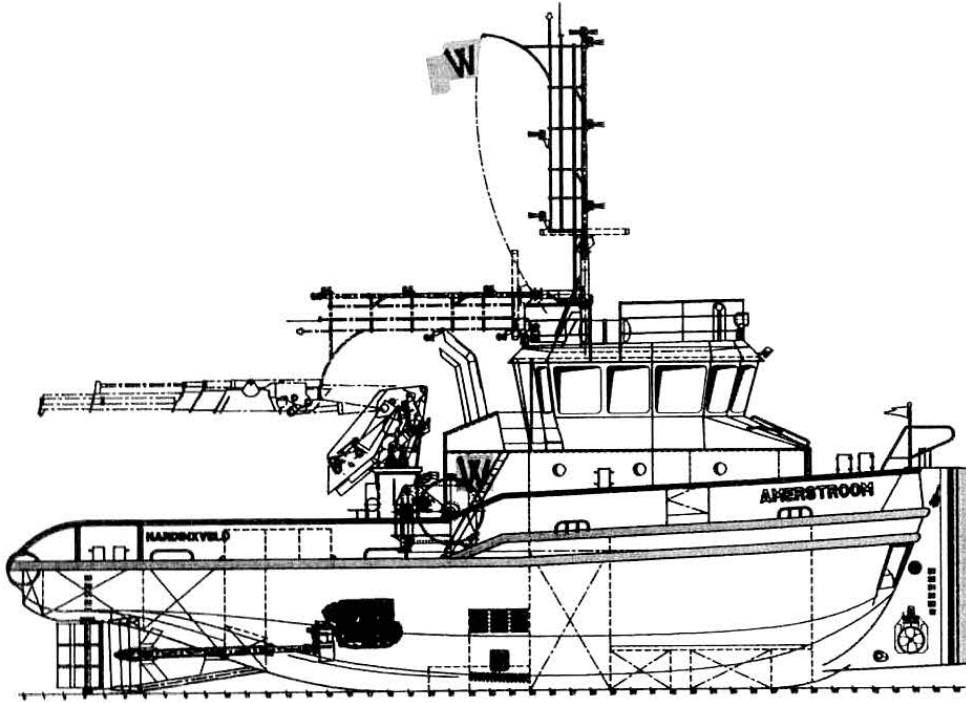
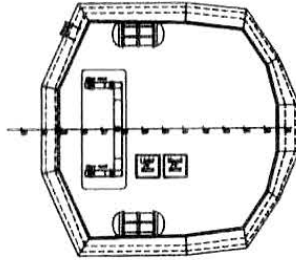
E info@wijngaarden.com
T +31 (0) 184 490 244

wijngaarden.com

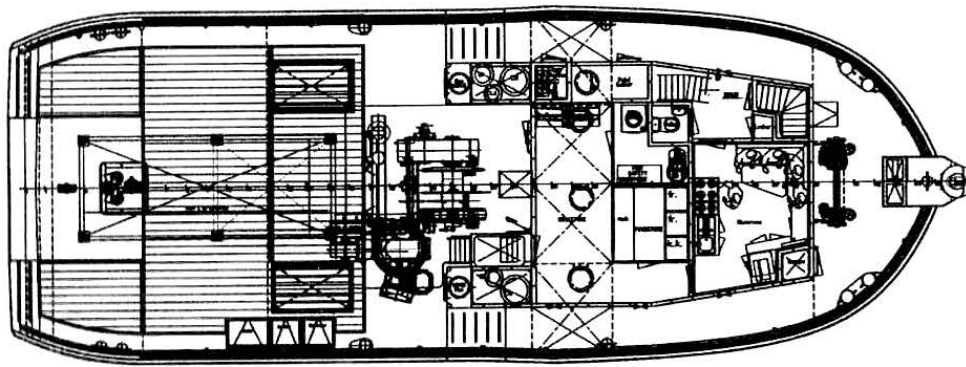
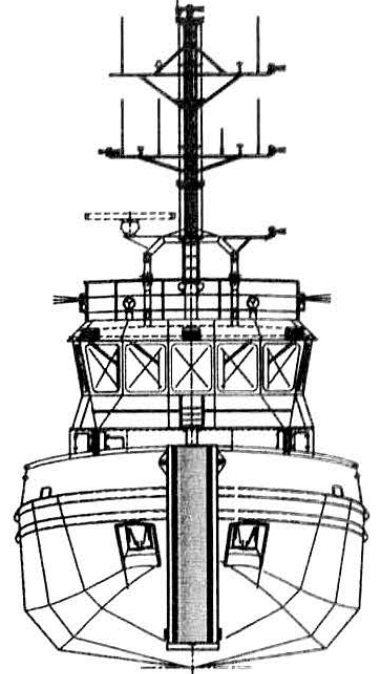
VIEW FROM STARBOARD



VIEW ON PORTSIDE



FRONTVIEW



AFTVIEW

