



LINGESTROOM

ANCHOR HANDLING TUG SUPPLY VESSEL

IMO nr.	9819404
Call sign	PICW
Flag	Dutch
Type	Shoalbuster 3512
Constructed	2017
Bollard Pull	61.8 tons
Speed	11.5 knots
Free deck space	145 m ²
Deckload	15.0 - 3.0 ton/m ²

Basic functions: Towing, Mooring, Pushing, Anchor Handling, Supplying, Surveying, Ploughing, Crew Transfer

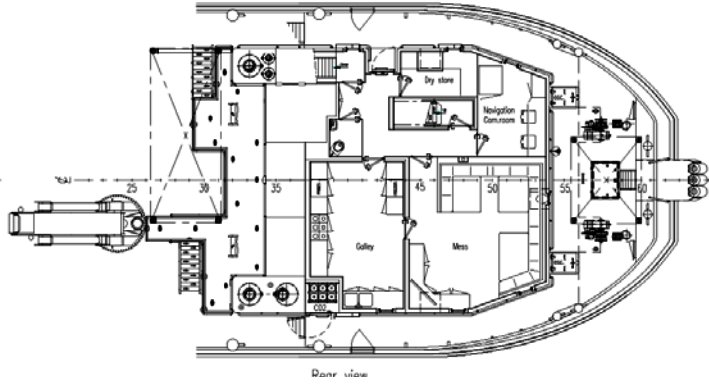
GRT / NT	476 / 142		
Dimensions	34.80 x 12.00 x 4.30 mtr.		
Draft (min. / max.)	2.90 / 3.40 mtr.		
Air draft (min. / max.)	10.86 / 17.88 mtr.		
Displacement	597 tons		
Engines	3x Caterpillar, type C32-TTA SCAC, each 970 kW / 1.319 HP @ 1800 rpm		
Gear Boxes	3x Reintjes, type WAF 675L reduction 7.07:1		
Generator Sets	2x Caterpillar, type C7.1, each 187.5 kVA, voltage 230/400 VAC - 50 Hz		
E-Power Generator	Combined with center C32 main engine, 600 ekW @ 1800 rpm - 440 VAC		
Hydro Set	Electric drive with 3x E-motor, 2x 110 kW / 1x 52 kW		
Propulsion	3x Fixed pitch propeller in Van der Giessen Optima Nozzle (Ø 2250 mm)		
Bow Thruster	Electrical driven FPP, 243 kW / 320 HP (Ø 960 mm)		
Tank capacities	Fuel oil 255.0 m ³	Lub oil 3.7 m ³	Hydr. Oil 2.0 m ³
	Gear oil 3.3 m ³	Dirty oil 4.5 m ³	Sludge 2.0 m ³
	Fresh water 67.0 m ³	Sewage 5.8 m ³	Bilge water 5.0 m ³
Transfer pumps	Fuel / Fresh water, type SIHI - 50 m ³ /hr. @ 4.8 bar		
Nautical equipment	2x Radar (sea/river) - Magnetic compass - Gyro compass - Auto pilot - GPS / Satellite navigation system ECDIS - AIS - 2x Echosounder - Speedlog - Windindicator 2x VHF + DSC - 1x VHF - SSB Radio + DSC - Navtex - VSAT system - 2x Inmarsat-C - EPIRB - SART 2x HH VHF - Satcom + GSM		
Deck equipment	Hydr. crane, HS Marine, type AKC290-LHE3, 11.3T - 16.5 mtr. / 24.4T - 7.89 mtr. Towing winch, Kraaijeveld, WF - 1000 mtr., Ø 48 mm steel wire, 59.1 / 115 tons + incl. AH winch, 600 mtr., Ø 48 mm steel wire, 101.7 / 150 tons Tugger winch, power 12 tons - Hydr. Towing pins + Chain stopper, SWL 100T Stern roller, L. 5.00 mtr., Ø 1180 mm, SWL 165T - Towing hook & Gob eye, SWL 55T Container locks (7x 20 ft. / 3x 10 ft.) - Push bow		
Special equipment	HV/AC installation - Sewage treatment plant - (fresh) Watermaker - Fuel oil separator Moonpool (Netto: 700 x 600 mm)		
Optional	A-frame (with plough) / 4p-Mooring system Waterinjection Dredging system / ROV - Diving Ops. platform		
Accommodation	11 persons (conform 'ILO 2006 rules')		
Classification	BV - I \boxtimes HULL • MACH / Tug, Special service - multi purpose ship / Unrestricted navigation • AUT-UMS - Notation: Anchor Handling / Notation: Clean ship NSI - Unrestricted navigation # IMO - Inventory of Hazardous Materials (Green Passport)		

VAN WIJNGAARDEN MARINE SERVICES B.V.

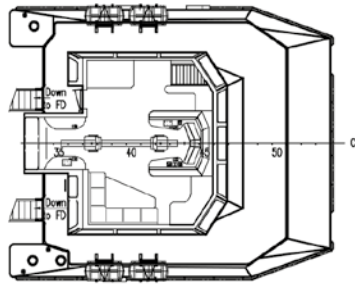
Buitenweistraat 15 • 3372 BC Hardinxveld-Giessendam • The Netherlands • T: +31 (0)184 490 244
F: +31 (0)184 490 265 • E: info@wijngaarden.com • I: www.wijngaarden.com



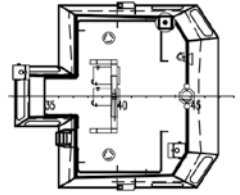
Forecastle deck



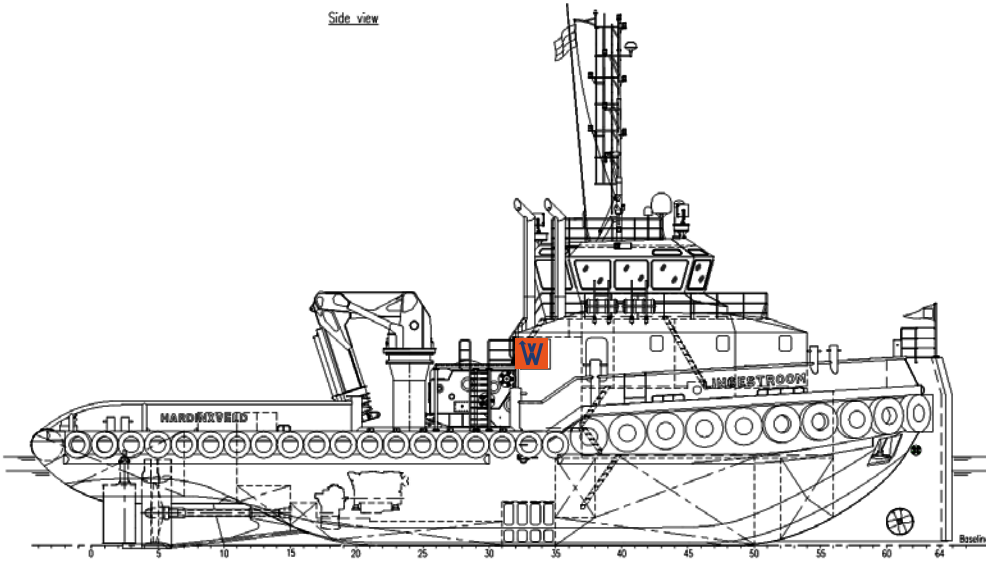
Wheelhouse



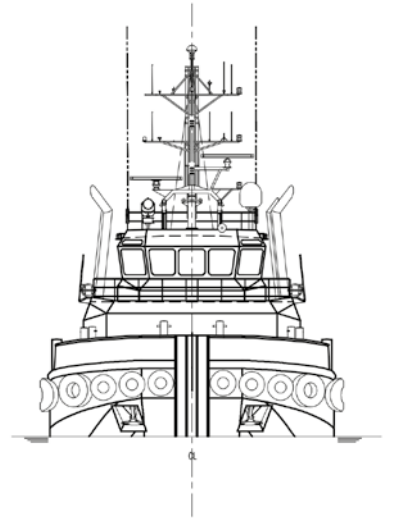
Top deck



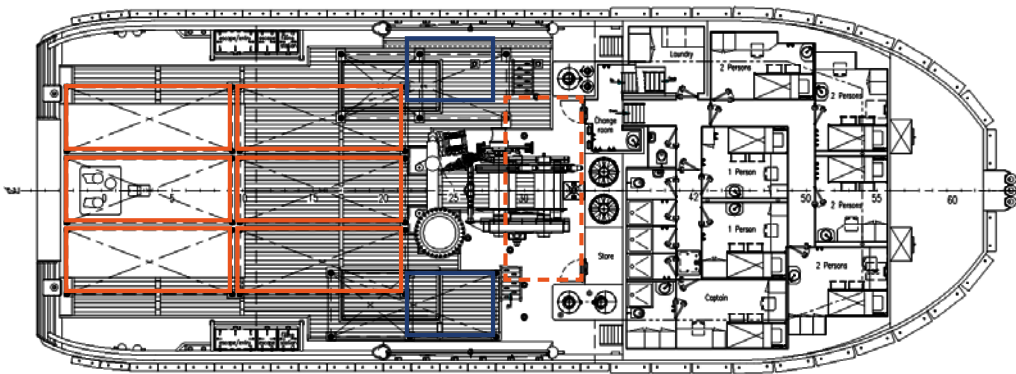
Side view



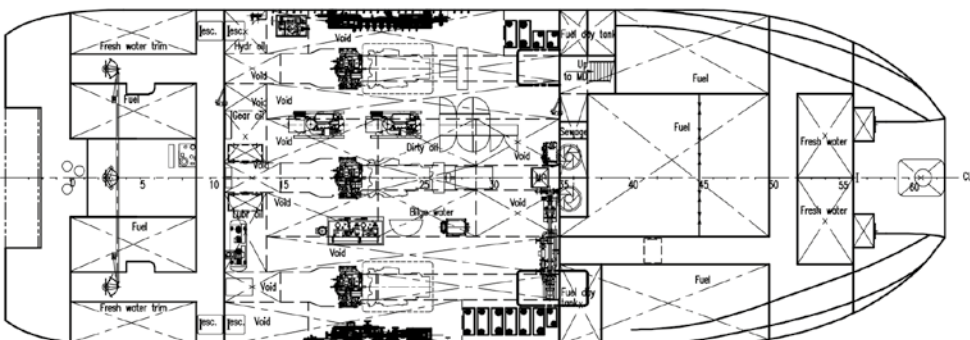
Front view



Main deck



Below main deck



Rear view

